

DESIGN TODAY

SPACES ETCETERA

January 2010 Rs 50

ISSUE FOCUS

YOUNG ARCHITECTS

PROJECTS BY:

DCOOP, Mumbai • SP+A, Mumbai •
 ANAGRAM ARCHITECTS, New Delhi •
 SPACEMATTERS, New Delhi • DADA
 PARTNERS, New Delhi • BLACK, Bangalore •
 ENSO, Bangalore • MOAD, Chennai • PSP
 ARCHITECTS, Chennai • OVOID, Puducherry

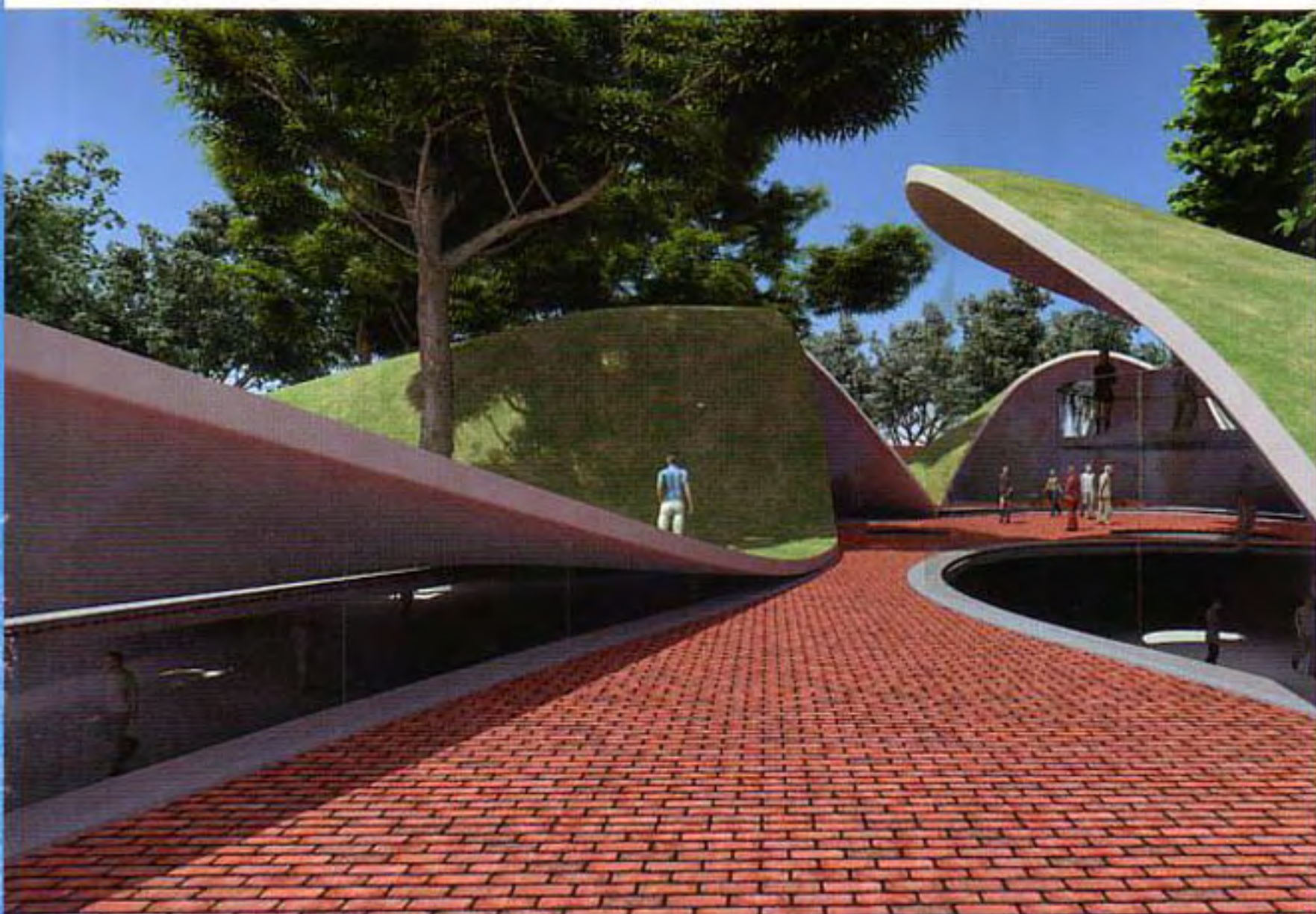
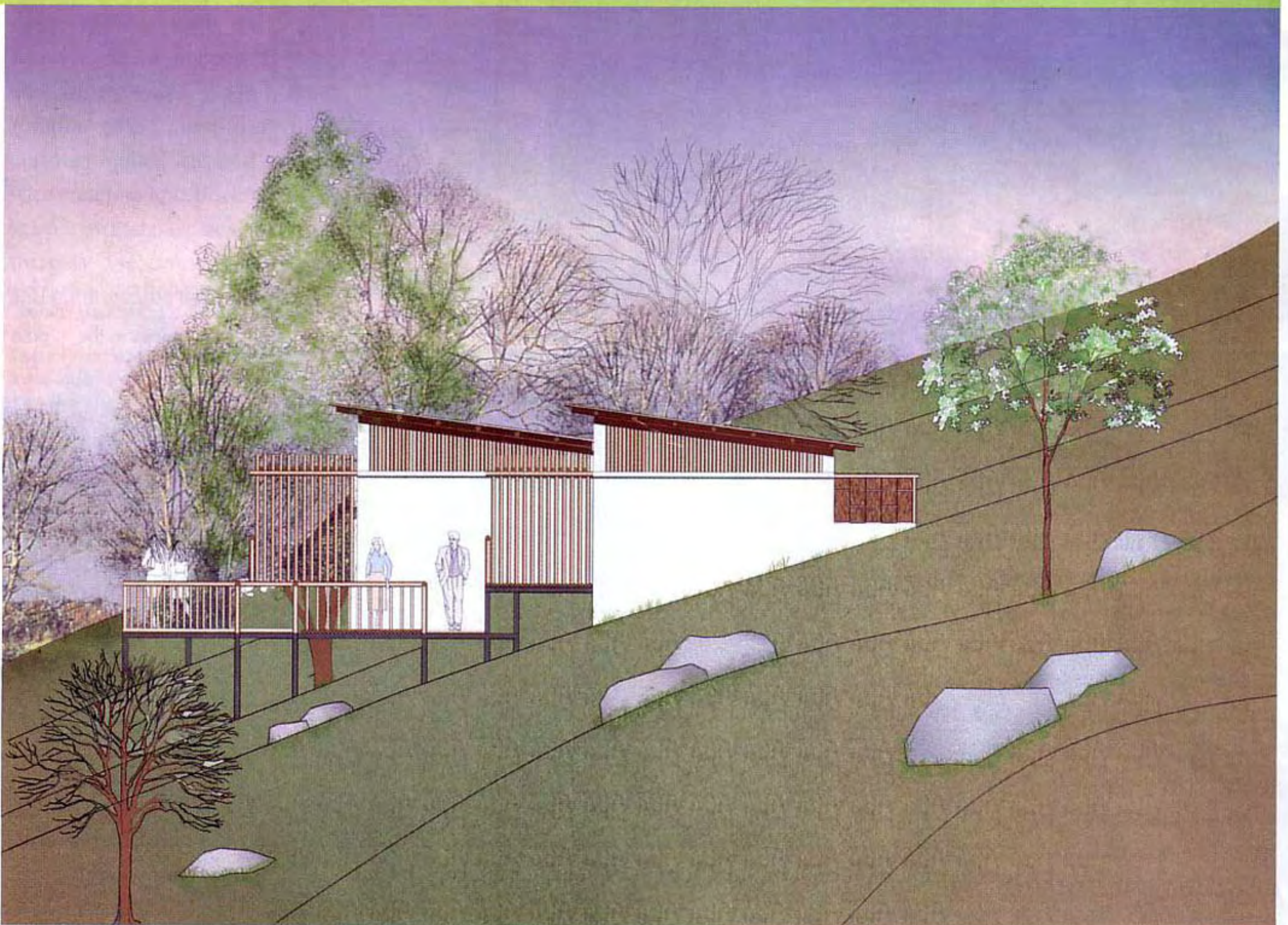


PHOTO ESSAY: MUMBAI AND ITS MANY STORIES ■ GUEST COLUMNS ON: WHAT MY CITY NEEDS

INSPIRED ART

THE CHENNAI-BASED FIRM PRADHAAN SETHI PHILIIP (PSP ARCHITECTS) HAS SUNIL PHILIIP, AJAY SETHI Prerana Pradhaan and Mugdha Sethi as its members. A design and consultancy firm, its projects draw inspiration from cinema and sometimes are larger than life, with an attention to detail and functionality



RESORT

AQUATERRA (PROPOSED)

Set on a two-acre hilly site near Rishikesh, close to the adventure company's river rafting camp, this eco-resort is planned to include 20 living units set in an informal way to suit the adventure tourist. These units will be scattered along the slopes, each with a private deck, offering a view of the Ganges, connected with raised wooden pathways. Stone quarried from the site and bamboo will be used extensively

in the construction. Since the area is an earthquake prone zone, the structures will be scaled down. Lightweight bamboo roofs and screens would complete the units, ensuring minimal impact on the ground. Since it's an adventure site, electricity is not a huge requirement, allowing for a small ecological footprint with water harvested from the site, solar water geysers and dry toilets.



Top: The staff housing and public buildings are built around the periphery allowing for enough green spaces in the middle

GROUP HOUSING MONNET ISPAT (ONGOING)

The project is on a 20-acre site situated near a steel plant in Chattisgarh. Staff housing and community buildings cover about 1,50,000 sq ft. A single entry road is bifurcated such that the residential development is one side and public buildings on the other. The overall development is arranged around the periphery leaving a large green 'pedestrian only' space carved out in the middle. A terracotta red colour draws attention to the largest building in the development. The surrounding areas are stark and the buildings stand as a welcome relief in the extensive landscaped greens. Fly ash and slag, both by-products of the steel plant have been used extensively in the construction.

Top Right: The staff buildings stand out in the extensive landscaped greens

Bottom: The largest community building in the project in terracotta red is the centre of attraction



CORPORATE OFFICE MATRIX VIEW

The office of this medical imaging research company is spread across 15,000 sq ft. The design creates an atmosphere reflecting the character and need of the people working in this organisation — thinking out of the box, getting under the skin and laying bare, in an environment that is always challenging. The design is heavily influenced from movies such as Stanley Kubric's '2001: A Space Odyssey' and Ridley Scott's 'Blade Runner'. Pristine white curvilinear forms and highlighted textured surfaces, bare concrete and brick give it the sci-fi industrial aesthetic, an imagery associated with science and cutting-edge technology.



Top: Pristine white curvilinear forms give the interiors a modern look

Bottom Left & Right: The design with sci-fi industrial aesthetic draws heavily from cinema

